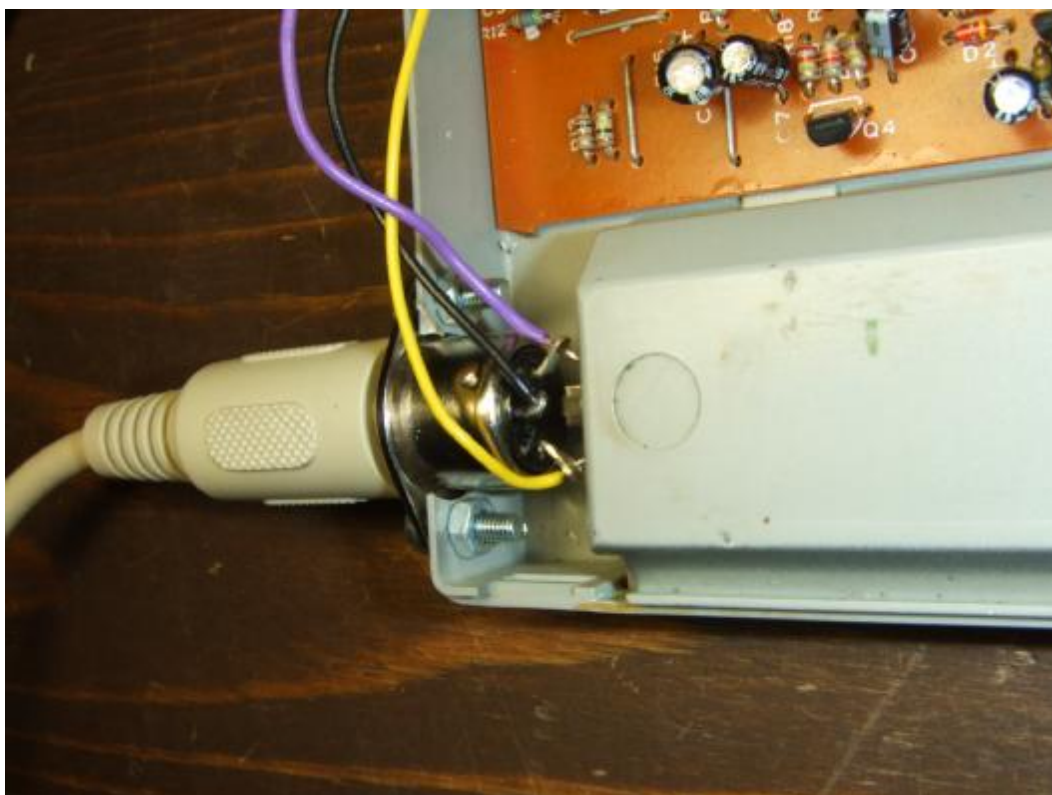
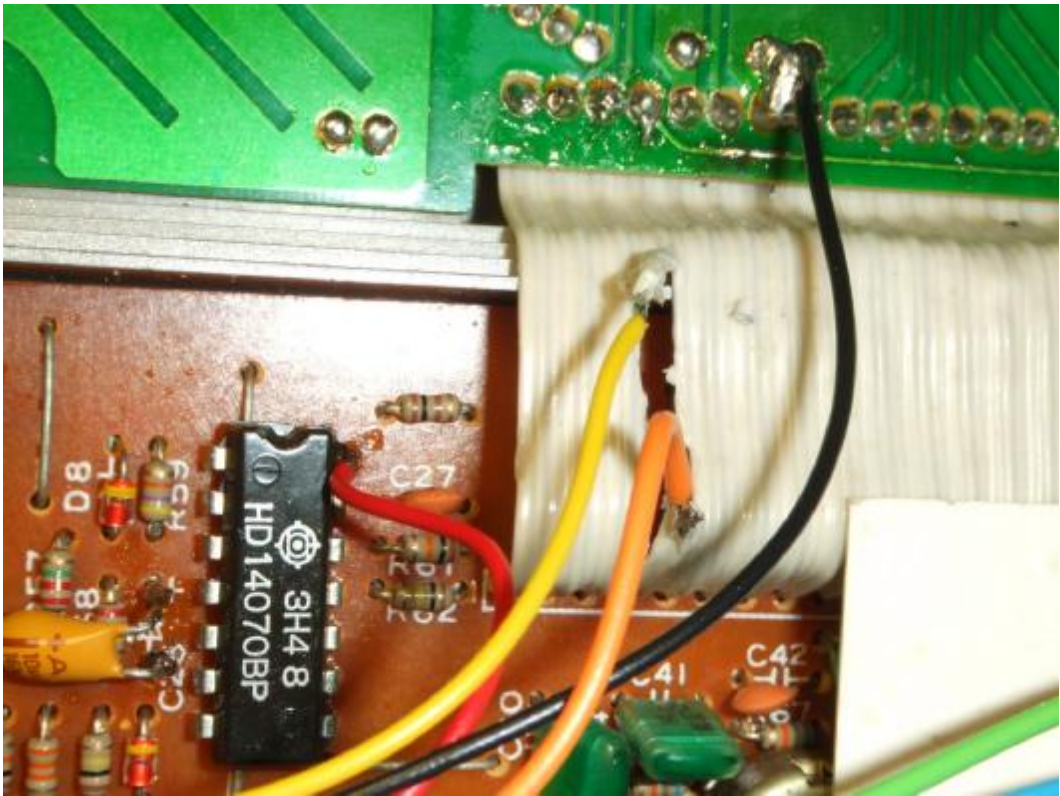
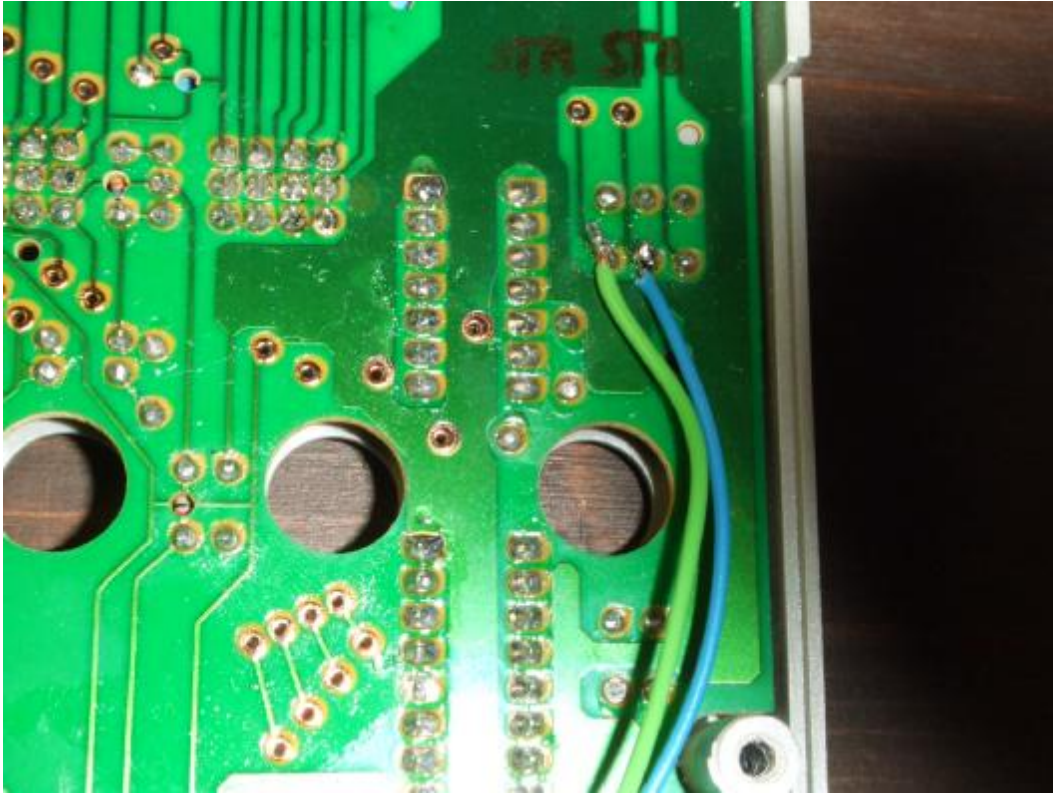


DR-110 - Sync In - Modification







The board must be isolated with a tape, and should be located as shown on the picture!

When no sync-clock (Roland) is present (no cable connected), the internal clock defines the tempo! This is the normal not synchronised mode.

As soon as a a sync-clock is present, the board switches from the internal clock-generator to the clock-signal, that is divided (1:2) out of the sync-clock signal.

To get back in the not synchronised mode, disconnect the sync-cable, switch off and switch on the DR-110, and it is controlled with its internal clock again.

The start/stop of your sync-master is used to start and stop the DR-110. The start/stop bottoms can still be used, and are `oring` with the start/stop of your sync-master.

Have fun

Klaus

klaus@acidlab.de
www.acidlab.de

... the hihats, the clap, so small and battery powered - Sync it !